

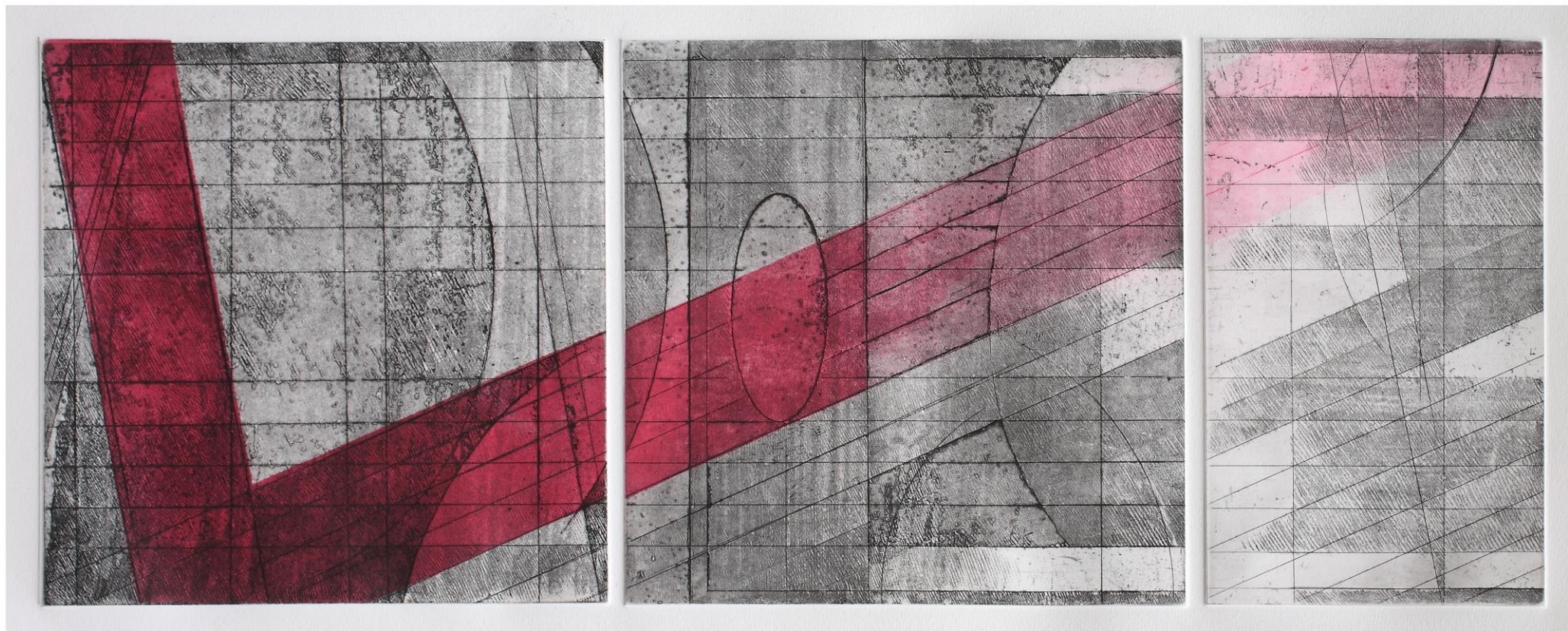


 **YORPIKUS**



**INCISIONE ITALIANA CONTEMPORANEA 1970-2020**  
**CONTEMPORARY ITALIAN PRINTMAKING 1970-2020**

*Progetto editoriale per avviso pubblico Italian Council 2021*



Bruno **ALLER**

*Kindertotenlieder*, 2012 (Acquaforte, acquatinta e ceramolle - cm 56x78,5)



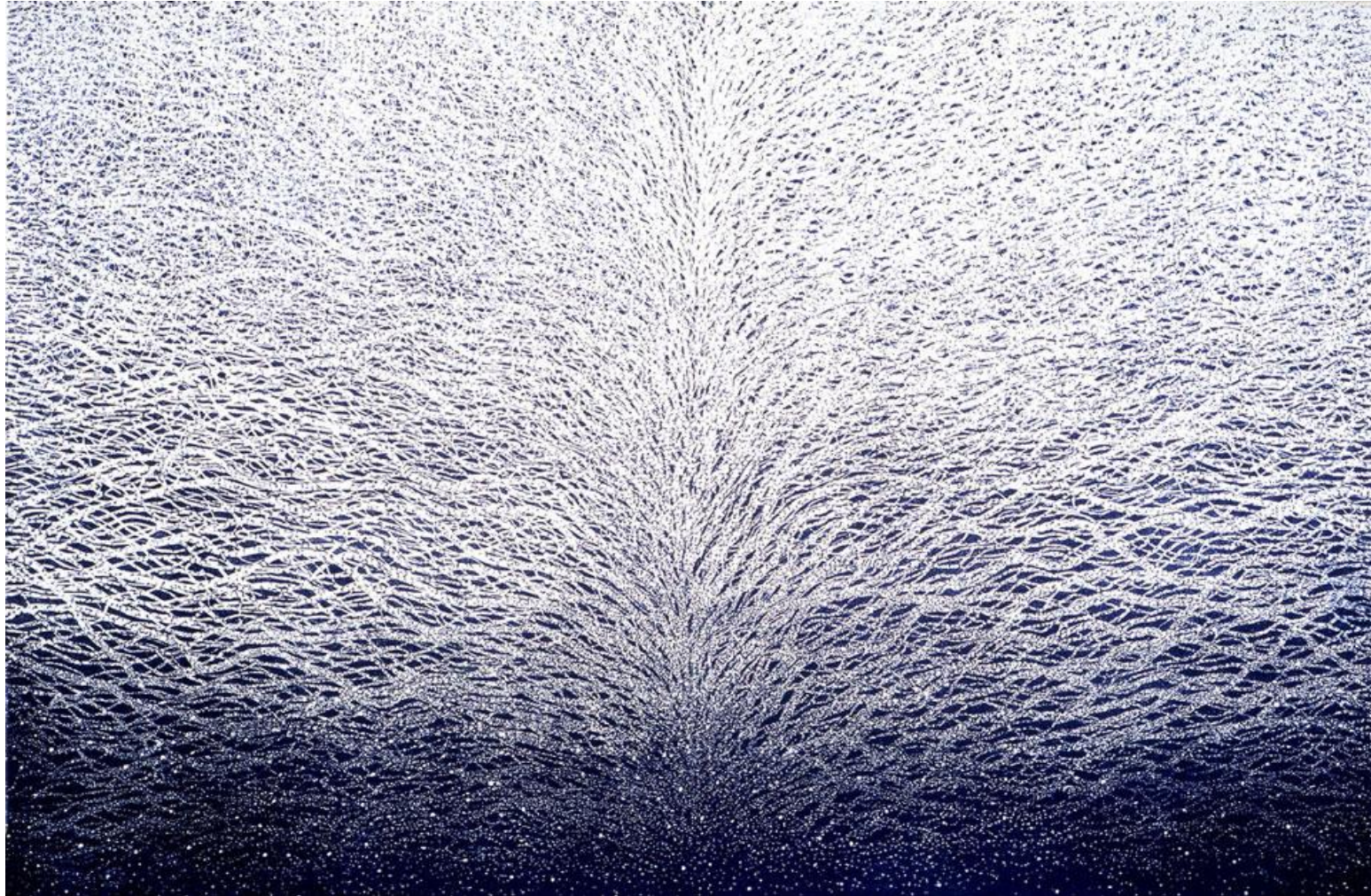
Gianna **BENTIVENGA**

*Muta*, 2015 (Acquafornte su zinco - cm 70 x 55)



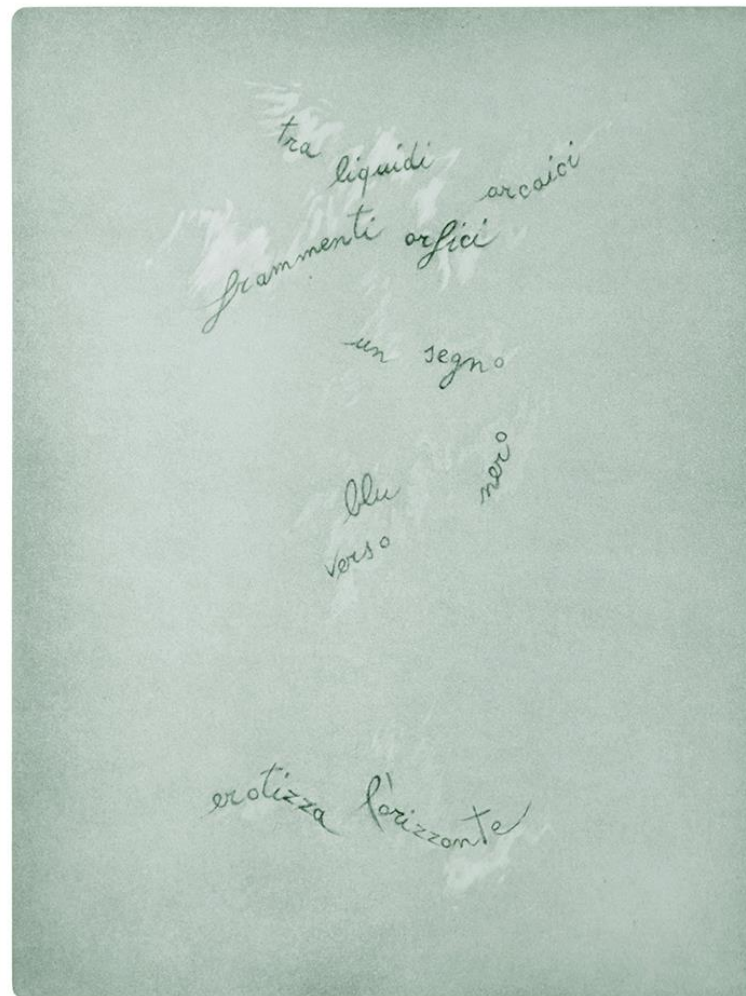
Maria Pina **BENTIVENGA**

*Two worlds*, 2012 (Acquaforte su zinco - cm 60x80)



Marina **BINDELLA**

*Pagine d'acqua*, 2001 (xilografia/linoleum - cm 80×120)



Luigi **BOILLE**

*Frammenti orfici*, 2014 (Acquatinta, ceramolle, puntasecca - cm 19x25)



Sandro **BRACCHITTA**

*Semi*, 2018 (Acido, carborundum e puntasecca - cm 60x100)



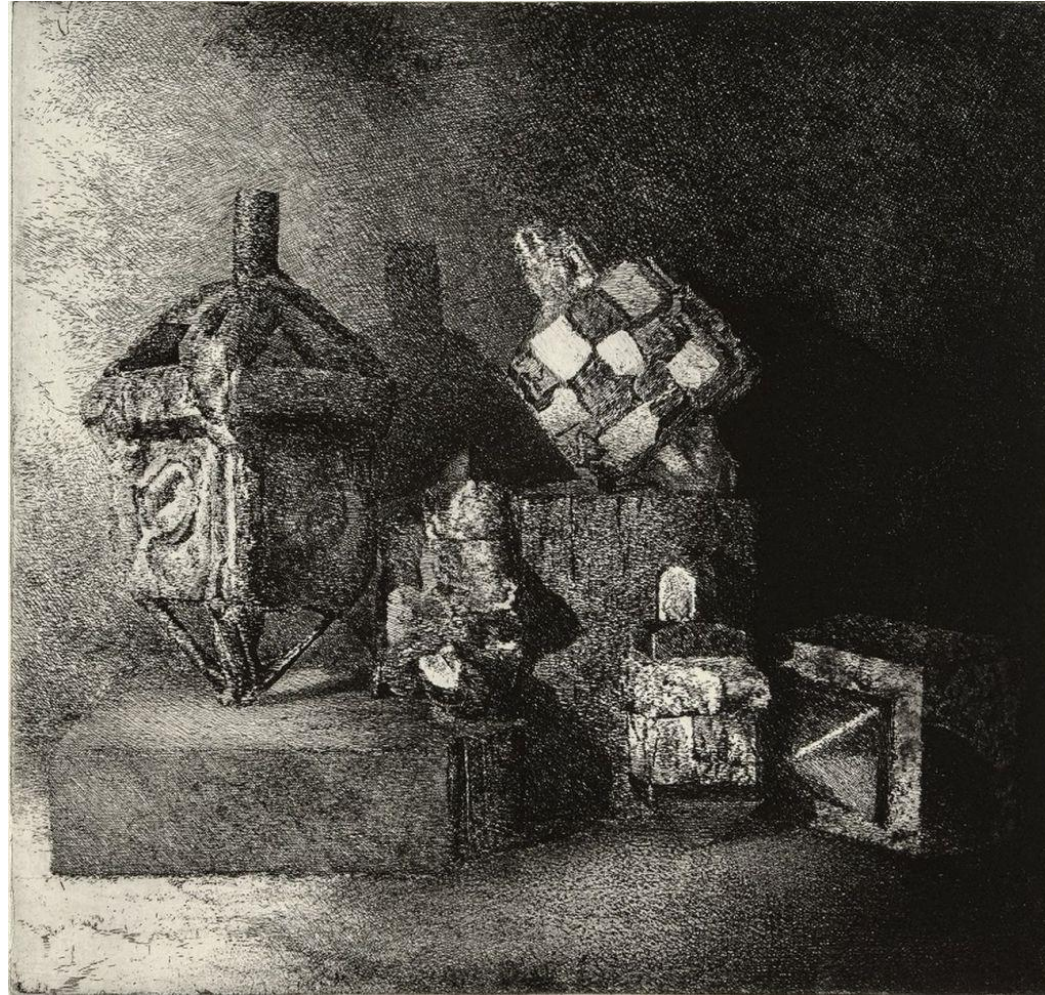
Malgorzata **CHOMITZ**

*Silenzio XII*, 2018 (linoleografia - cm 50x70)



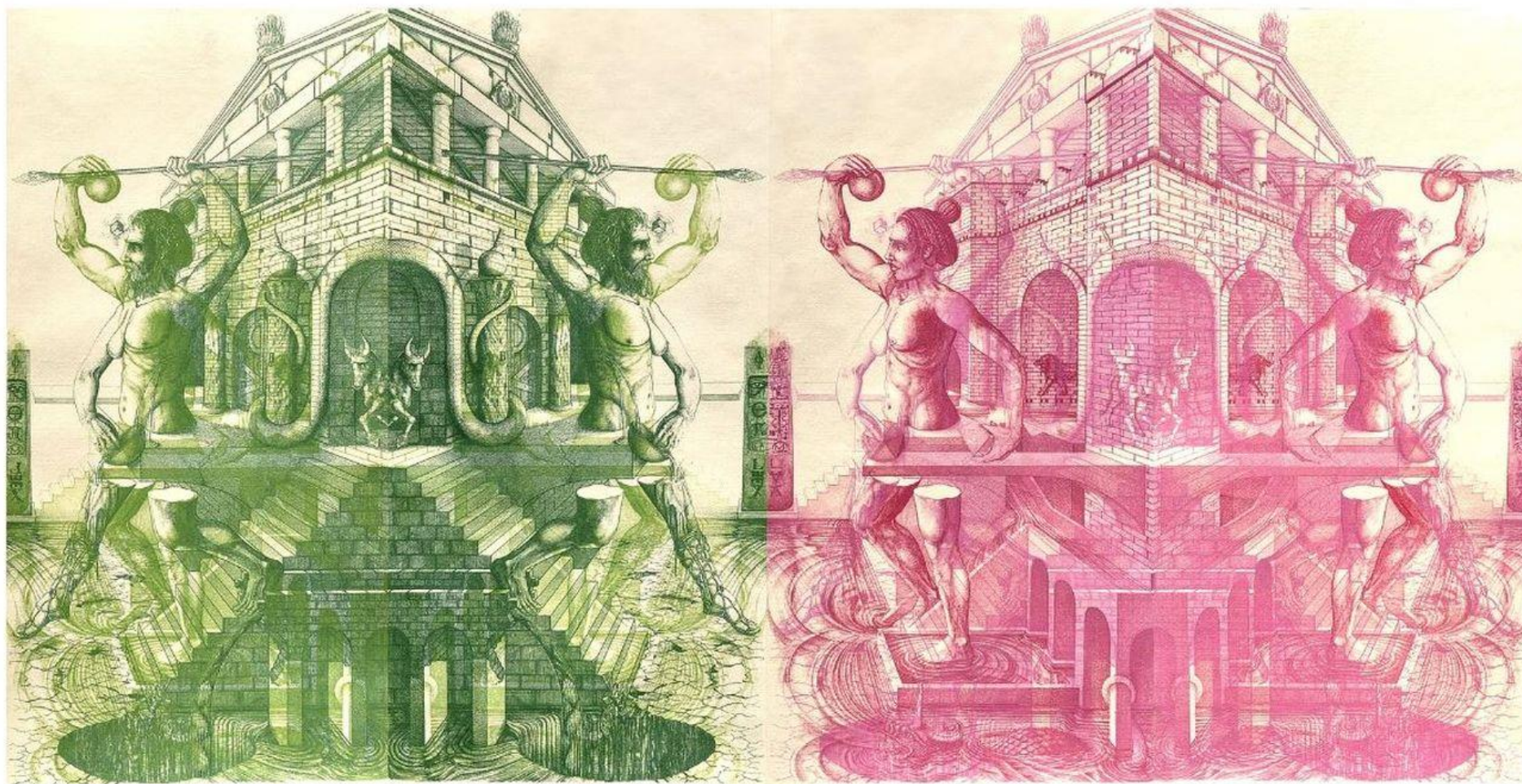
Elisabetta **DIAMANTI**

*Landscape I*, 2018 (Incisione calcografica - cm 25x35)



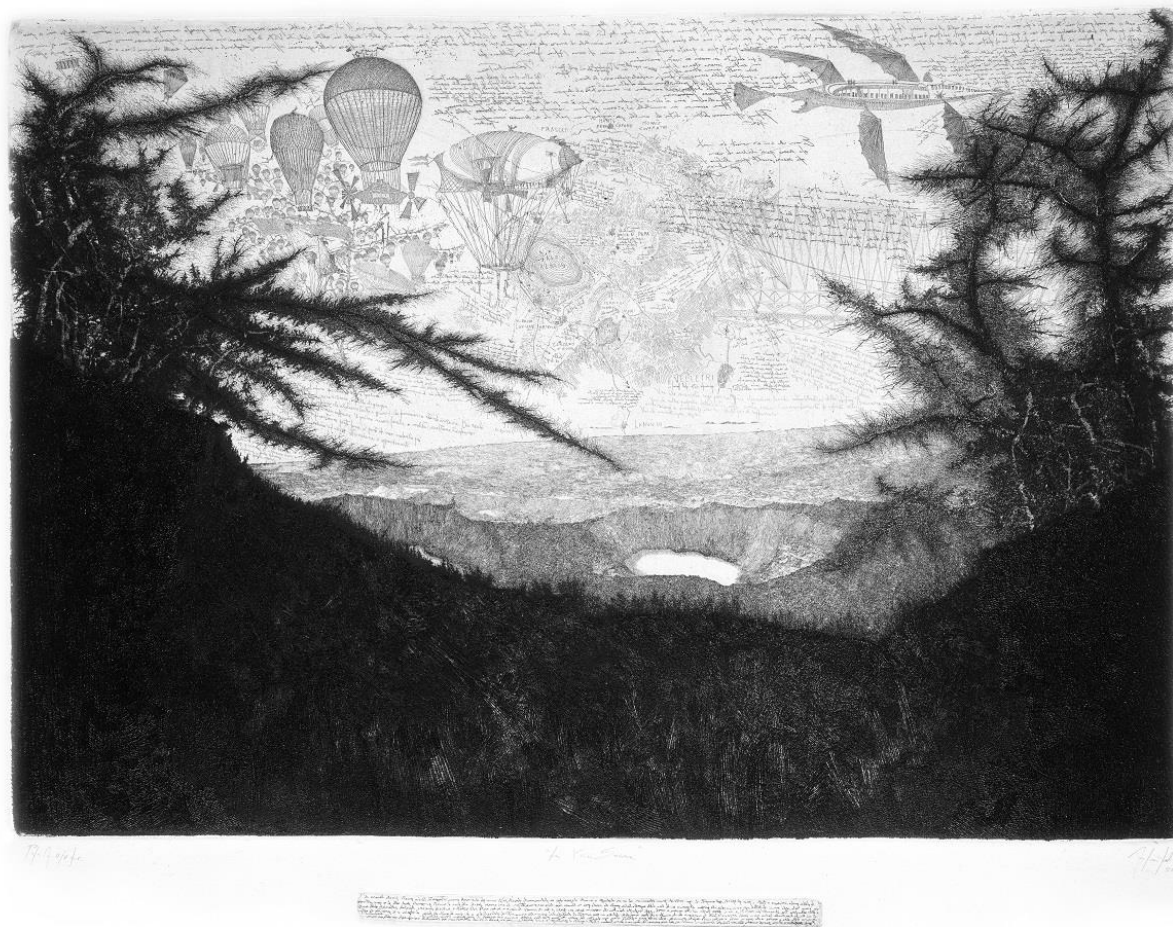
Franco **FANELLI**

*Le ombre di Faraqat*, 2020 (acquaforte - cm 27x29)



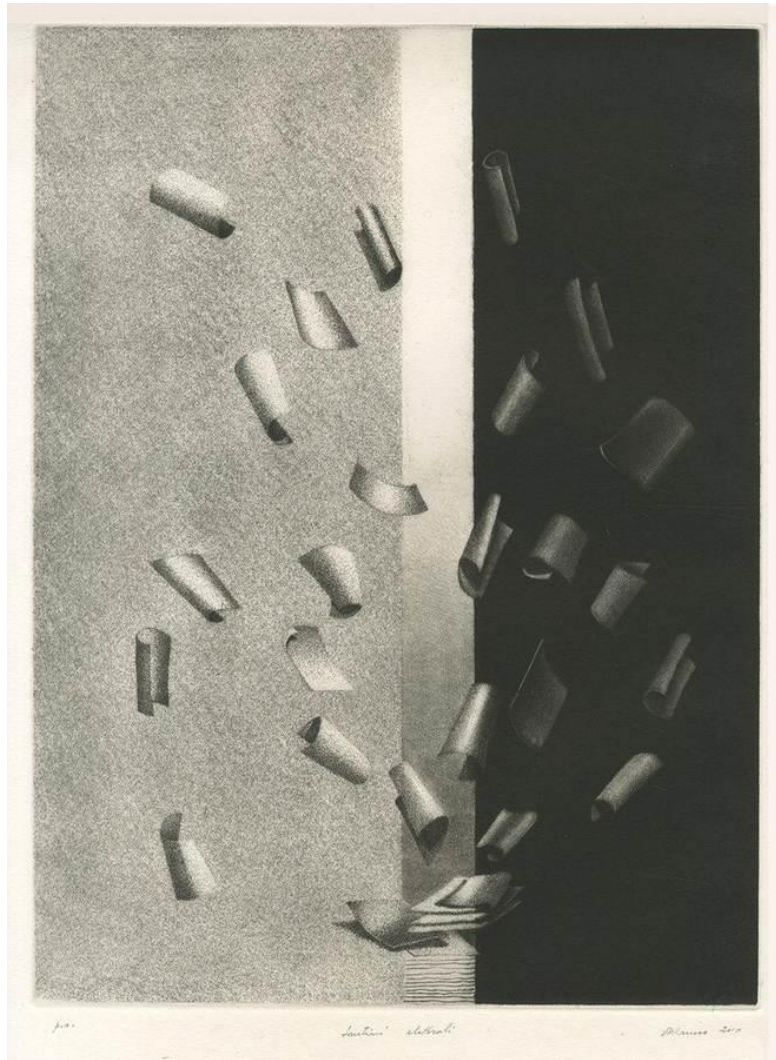
Alessandro **FORNACI**

*Lux Lex*, 2009 (acquaforte, ceramolle, bulino - cm 50x100)



Andrea **LELARIO**

*La via sacra*, 2003 (acquaforte e bulino su rame – cm 50x70)



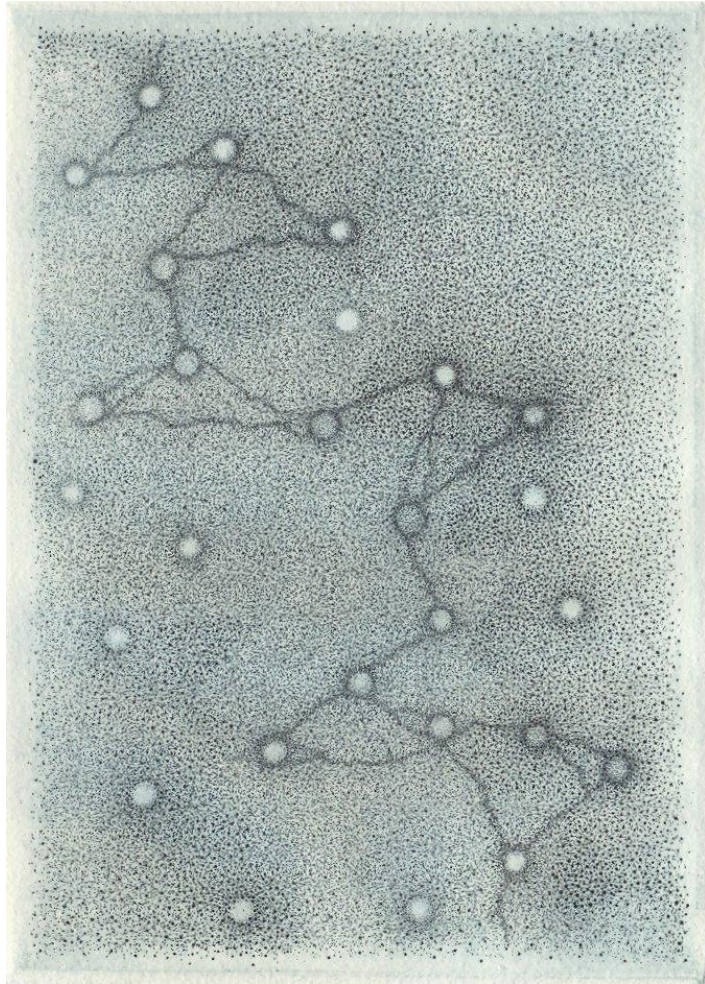
Vittorio **MANNO**

*Santini elettorali*, 2010 (acquaforte - cm 66x90)



Gianluca **MURASECCHI**

*UBI*, 2020 (xilografia cm 34x24)



Giulia **NAPOLEONE**

*Senza titolo*, 2003 (Incisione a punzone - cm 16,5 x 11,5)



Achille **PACE**

*Senza titolo*, 1997 (ceramolle - cm 30x39,5)



Francesco **PARISI**

*Martirio di Rabbi Akiba*, 2014 (xilografia - cm 34x23)



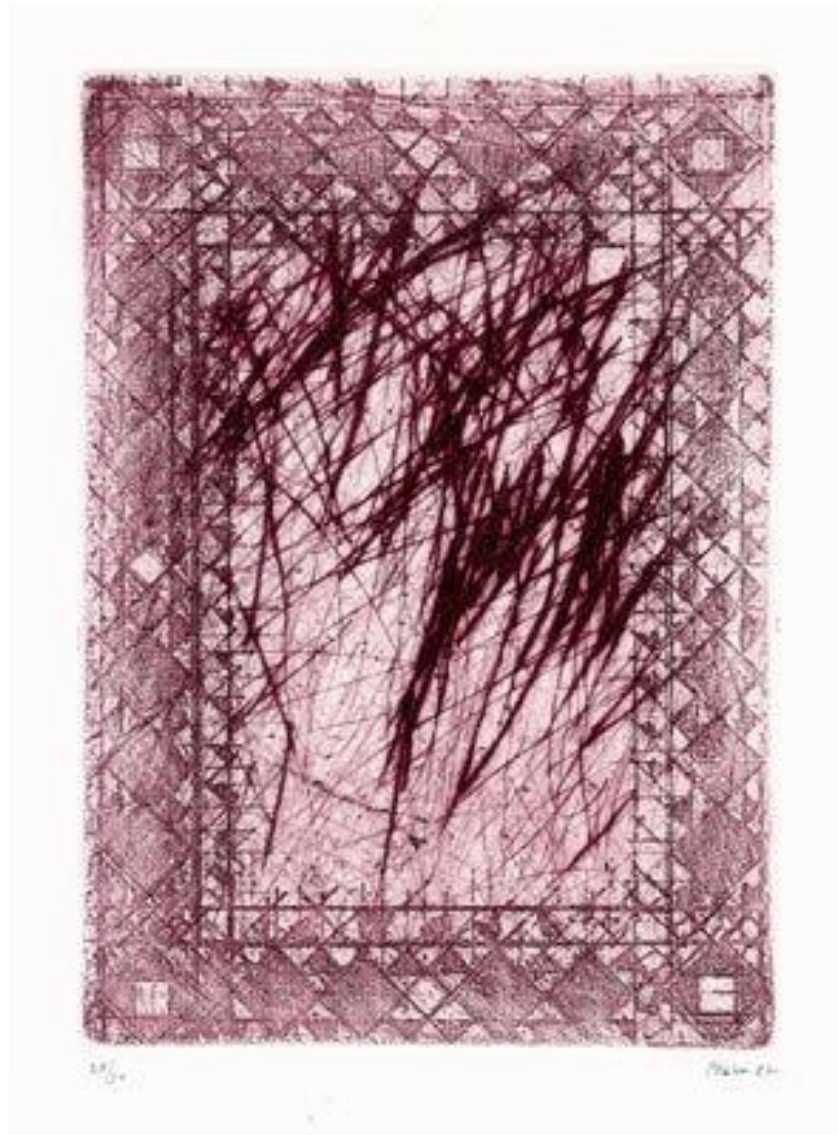
Toni **PECORARO**

*Labirinto n. 28*, 2007 (acquaforte, acquatinta, puntasecca - cm 32x33)



Gianfranco **SCHIALVINO**

*Relitti*, 2011 (xilografia - cm 43,5x55)



Guido **STRAZZA**

*Cosmate*, 1987 (puntasecca - cm 45x34)



Jean-Pierre **VELLY**

*Il massacro degli innocenti*, 1990 (acquaforte, acquatinta - cm 50x70)